



BC9500 Explosion proof ballast box

BC9500A

Ex Code: Ex d II C T6
 Ex d II C T5
 Ex d II C T4
 Standard: GB3836.1, GB3836.2
 IEC60079-1:2007,MOD

Application

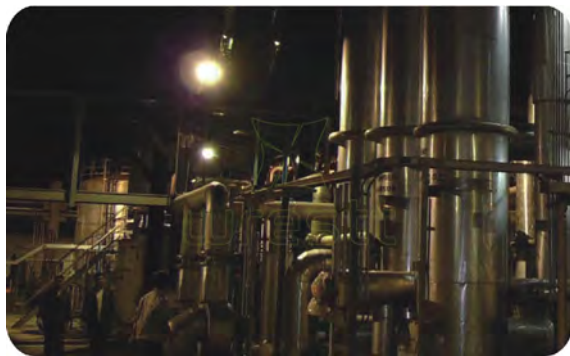
This product is suitable to be used in explosive and flammable place, and various indoor and outdoor operation and construction sites.

Characteristics of performance

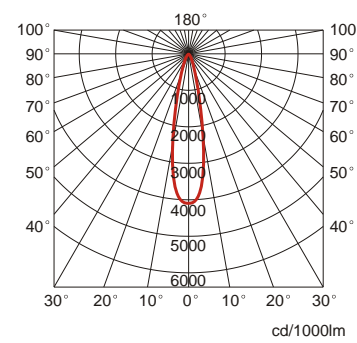
- Light Source: Imported famous brand light source and ballast with high efficient long life span. The average service life of the bulb is over 10,000 hours. Low maintenance.
- World famous brand light source and electrical appliance, with stable performance. It can give more 20% light over the other manufacturers.
- Material: aluminium alloy, tempered glass.
- Surface treatment: electro static spraying treatment
- With strong resistant to corrosion. Water and dust, applicable to various harsh environments.
- The light source of BC9500A is HID. It can restart quickly after the temporary power outage so that it decrease the effect on the lamp.
- Multi mounting options: ceiling mounted, wall mounted, seated mounted etc.

Main specification

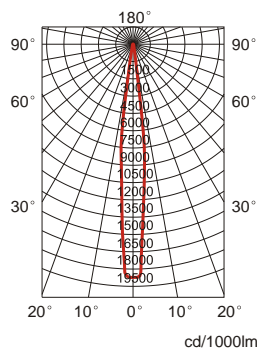
Specification	Unit	BC9500	BC9500A
Rated Voltage	V	AC220	DC12V or DC24V
Cable Diameter	Lamp	φ 8~ φ 10	φ 8~ φ 10
	Ballast box	φ 8~ φ 10	—
Dimension	Lamp Head	φ 180	φ 180
	Length of Lamp Head	242	242
	Total Height	295	295
Weight	Lamp	3.8	3.4
	Ballast box	4.2	—



Light distribution curve



BC9500 150W

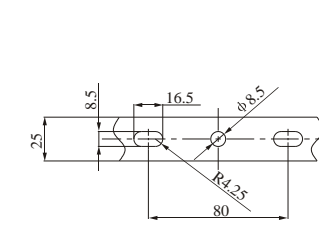
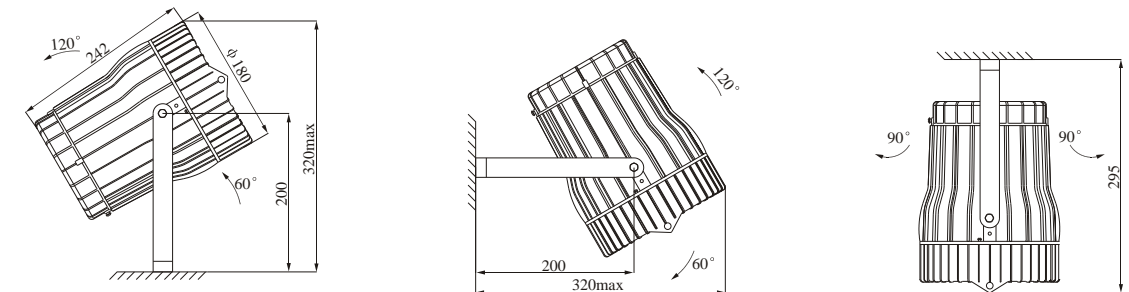


BC9500A 35W HID

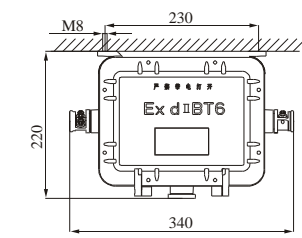
Ordering reference

Ordering Reference	Light Source	Wattage (W)	Rated Voltage	Luminous Flux (lm)	Lamp Average Life (h)	Temperature
BC9500-J70	MH	70	AC220	5,500	10,000	T5
BC9500-J100	MH	100	AC220	9,000	10,000	T4
BC9500-J150	MH	150	AC220	13,000	10,000	T4
BC9500A-X35-DC12	HID	35	DC12	3,200	10,000	T6
BC9500A-X35-DC24	HID	35	DC24	3,200	10,000	T6

Drawing of dimension (Dimensions in mm)



Lamp mounting bracket



Explosion proof ballast box