

LED



Application

1. Approved for safe use in the explosive environment under the coal mine where the methane and the explosive dust exist.
2. It is the idea lighting solution for the underground tunnel in the underground chamber in the mining field.

Characteristics of performance

- Its reflector is specially designed for the tunnel. At the height of 3.5meters,24w can reach 35Lux, 48w can reach 80Lux. The light distribution distance is more than 15meters. It can save 65% on energy than the metal halide lamp.
- It adopts American CREE LED as light source, service life reach 100,000 hours
- Equipment world famous brand electrical appliance, has a highly stable performance.
- The LED is seamless connected to the heat sink, which help to heat dissipating, ensured the LED'S life span.
- Supplied with stainless chain which have hooks on the end and the chain's length is adjustable.
- The anti corrosion, abrasion proof, power coated cover which is dust proof, water proof , make the lamp an excellent option for all kinds of high stress environment.

Main specification

Input Voltage	AC90 to 264V
Output Voltage	DC18-28V
Frequency	47-63Hz
Ingress Protection	IP65
Anti Corrosion Grade	WF2
Insulation Grade	I
Space Height Ratio	4
Thread	G3/4"
Leading-in cable diameter	φ 8mm - φ 14mm
Dimension	424 × 177 × 77mm
Weight	4.1Kg

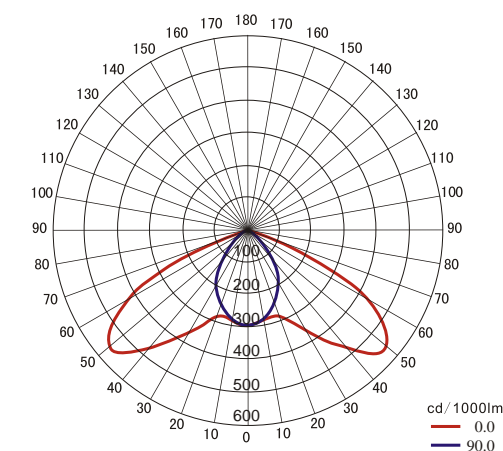
Ex Code: Ex d I
Standard: GB3836.1, GB3836.2, MT221



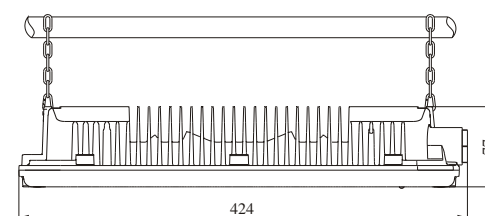
Ordering reference

Ordering Reference	Light Source	Wattage(W)	Luminous Flux (lm)	Replaces		
				HID	Electroless lamp	Fluorescent lamp
DGS10/127L(A)	LED	10	1,240	/	30W	40W
DGS24/127L(A)	LED	24	2,792	70W	60W	80W
DGS35/127L(A)	LED	35	4,520	100W	100W	120W
DGS48/127L(A)	LED	48	5,240	150W	135W	150W

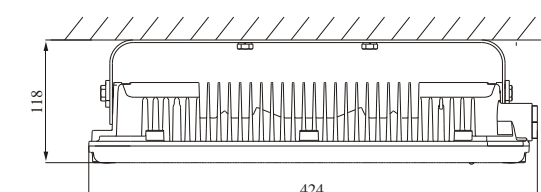
Light distribution curve



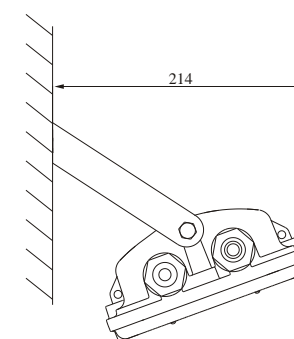
Drawing of dimension (Dimensions in mm)



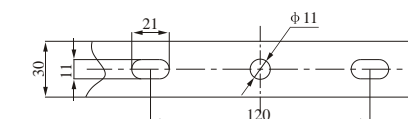
(G) (standard)



(D) (optional)



(B) (optional)



Mounting hole drawing