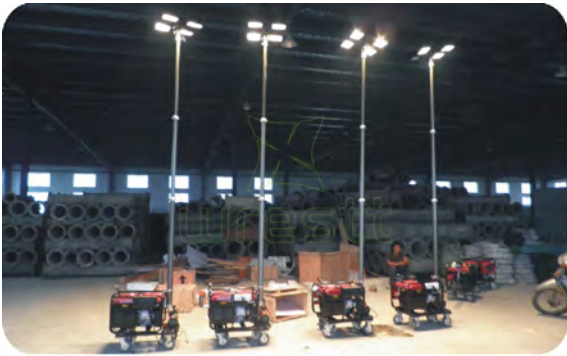


IP65



Model B

Model A



## Application

It is applicable to large and high brightness lighting in the operation sites of large scale construction, rescue and maintenance, accident handling, disaster relieve, etc.

## Characteristics of Performance

- The unit can tilt within 300 degrees vertically. The remote control can control the lamp rotation and the light tower on/off within 30 meters.
- The air pump controls extension of the mast.
- The caster wheels and railway wheels on generator set ensure the easy transportation on uneven road.
- The unit is made of high strength metallic materials to ensure the normal operation under various harsh environments and climate. It is IP65, and can stand force 8 wind fresh gale.
- This product is adjustable according to customer's requirements.
- Equipped with control box except the remote control. When the remote control doesn't work or the battery dead, operator can use the control box to control the light tower.

## Main specification

Specification		Unit	ZW3500A	ZW3500B	ZW3510A	ZW3510B
Rated Voltage		VAC	220	220	220	220
Lamp	Power of lamp head	W	500×4	500×4	1,000×4	1,000×4
	Light output	lm	10,000×4	10,000×4	20,000×4	20,000×4
	Average service life	h	2,000	2,000	2,000	2,000
Continuous working time	Units once filled oil	h	9-13	9-13	9-13	9-13
High luminance of lamp disc	Minimum height	mm	1,850	1,850	1,850	1,580 or 2,100
	Maximum lifting height		6,300	4,500	6,300	3,500 or 4,500
Generation set	Rated output power/ rated volume of the fuel	W/L	2,000/15	2,000/15	5,000/25	5,000/25
Overall dimension	Length×Width×Height	mm	800×500×750	1,600×500×800	900×550×850	1,600×550×900
Net Weight		Kg	78	78	110	103



Controller



Output sockets



Adjust the angle automatically



Portable

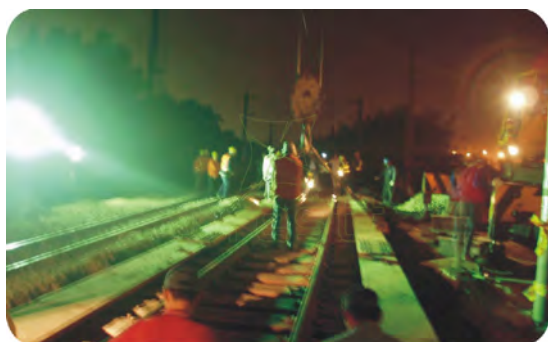


Controlling box (optional)

IP65

-20 °C

+50 °C



## Application

This product is for use as large area illumination solution on the working sites of large constructions, maintenance, repair, accident spot, and disaster relief etc.

## Characteristics of Performance

- The lamp's illuminating angle can be adjusted vertically and horizontally. Its light can cover an area which's radius is 100-150m.
- The lamp is designed to stand harsh vibration. Which solves the bulb and bracket break problem.
- The air pump controls extension of the mast. The remote control can control the on/off of the light tower within 30meters.
- The caster wheels and railway wheels on generator set ensure the easily transportation on uneven road.
- The unit is made of high strength metallic materials to ensure the normal operation under various harsh environments and climate. It is IP65, and can stand force 8 wind fresh gale.
- This product is adjustable according to customer's requirements.

## Main specification

Specification		Unit	ZW3500C	ZW3510C	
Rated voltage		VAC	220	220	
Lamp panel	Power		W	400×2	1000×2
	HPS discharge lamp	Light output	lm	48000×2	140000×2
		Lamp useful time	h	25000	28500
	MH discharge lamp	Light output	lm	36000×2	105000×2
Lamp useful time		h	9000	9000	
Continuous operation time		h	13	13	
Cylinder	Smallest rise height	mm	1750	1750	
	Highest rise height	mm	3500	3500	
Generator	Rated output power/ rated capacity of fuel oil	W/L	2000 / 15	5000 / 25	
Dimension	length×width×height	mm	1500×500×800	1500×500×800	
Weight		Kg	72	112	



Illuminate Angle adjustable



Controller

# ZW3520B Portable Light Tower



IP65



## Application

This unit is for use at all kinds of night work site and rescue and relief work spot.

## Characteristics of Performance

- The cart adopts the aluminum frame, light weight and easy for transportation.
- It uses digital inverter petrol generator set, with stable performance, quiet and light weight.
- Equipped with ceramic metal halide light source with long service life and high efficacy.
- The mast extension height is 1.45-2.8meters. The mast is foldable.
- Easy to transportation on bumpy road
- LED lamp is available according to customers' requirements.

## Main specification

Specification	Unit	ZW3520B
Generator rated output voltage	VAC	220
Generator max output power	KVA	1.05
Generator rated output power	VA	900
Generator DC output		12V / 8.3A
Rated Power	W	150×2
Light output	lm	11,500×2
Operation time after full fueled	h	>6
Mast extension height	mm	1,450~2,800
Beam range (1lx)	m	90
Weight	Kg	42

IP65



## Application

This product is suitable for use as large area illumination solution at the working sites of constructions, maintenance, repair, accident spot, and disaster relief etc.

## Characteristics of Performance

- The cart adopts the aluminum frame, light weight and easy for transportation.
- Famous world brand components, stable and efficient.
- The mast extension height is 1.45-2.8meters. The mast is foldable.
- Easy to transportation on bumpy road
- LED lamp is available according to customers' requirements.

## Main specification

Specification		Unit	ZW3520C
Rated voltage		VAC	220V
Generator DC output			12V / 8.3A
Lamp	Rated Power	V	150 × 2
	Light output	lm	11,500 × 2
	Service life	h	10,000
Operation time after full fueled		h	>6
Min extension height		mm	1,450
Mast extension height		mm	2,800
Generator	Rated output power / Fuel capacity	KW/L	0.9 / 3.8
Dimension	L*w*h	mm	720 × 475 × 1645
Weight	Generation and lamp	Kg	47.5



# ZW3530 Portable LED Working Light



IP67

-20°C

+50°C



## Application

This product is suitable for use at the working sites of railway, constructions, maintenance, repairing, and any other night work tasks.

## Characteristics of Performance

- Head of lamp function: consists of two 60w LED spotlight, The led lamp can be rotated within 360°. Customers can choose 25°, 40°, 80°, as the led lamp's beam angle.
- Illumination area: The tripods' maximum extension height is 2.8meters. The locking device of the lamp bracket can locate the lamp at the desired lighting angle.
- The lamps' illumination area's semidiameter can reach 30-50meters.
- Working voltage: The unit can be powered by the 220V main power supplier.
- Application: light weight, easy to transportation, suitable to be used in lots of places.

## Main specification

Specification		ZW3530
Lamp	Input voltage	AC90-264V
	Output voltage	DC36-48V
	Frequency	47-63Hz
	Rated power	60W × 2
	Light output	6,996lm × 2
	Average service life	100,000
Tripod	Minimum extension height	1.2m
	Maximum extension height	2.8m
Dimension of lamp		242 × φ 200 × 320mm
Weight	Lamp	12Kg
	Tripod	2Kg